



Accountability Report

Results-Based Evaluation System

Issued 2010–11



Parkview High School

David T. Smith, *Principal*

Calvin Watts, *Area Superintendent*

Gwinnett County Public Schools (GCPS) has developed an accountability system for improving schools called the Results-Based Evaluation System (RBES). RBES fairly and systematically measures a school's progress, providing a process that clearly communicates expectations; reviews, monitors, and supports school performance; and evaluates that performance.

The Parkview High school council and school leaders collaborated on the highlights included in this accountability report, which also serves as the school's annual report. The report provides consolidated information on the school's effectiveness, based on multiple measures and student characteristics. **Please review this report to learn more about the school's improvement efforts and progress.**

Key Results from 2009–10 Local School Plans for Improvement

Local School Plans for Improvement are plans developed locally by school administrators, teachers, and parent advisory groups. These plans outline school goals. Reviewing data for End of Course Tests and Georgia High School Graduation Tests, for the school overall and for student subgroups, helps us identify gaps in achievement. This allows us to focus and provide the needed support as we work to close achievement gaps and improving learning for all students.

Goal #1: To improve academic performance in English language arts for all students— specifically focusing on support for students learning English, students with disabilities, and African American students— assuring that all subgroups meet requirements for Adequate Yearly Progress (AYP).

Goal #2: To improve academic performance in mathematics for all students— specifically focusing on support for students learning English and students with disabilities— assuring that all subgroups meet requirements for Adequate Yearly Progress (AYP).

Results: Parkview students continue to perform well on high-stakes assessments, scoring above local, state, and national averages. On the Georgia High School Graduation Tests, our students ranked either first or second in the district in all areas. Participation on Advanced Placement (AP) exams increased by 35% over participation the previous year. We are pleased with our progress toward the goals in our Local School Plans for Improvement. Our students met AYP requirements in both English language arts and math. The pursuit of academic excellence for all students continues to be the focus at Parkview High School.

CONTENTS:

- Key Results on Improvement Plans
- 2009–10 Results:
 - Senior Report
 - SAT
 - Gateway Assessment
 - Georgia High School Graduation Tests and Adequate Yearly Progress
 - Advanced Placement Exams
- 2009–10 Highlights
- Staff Data
- Student Data
- School Safety Perceptions

Tell us what you think about this report.

Click here to complete a questionnaire online.

2009–10 Senior Report

	Students Completing HS†	Number of Seniors Planning to Attend College or Postsecondary School*	Number of Honor Graduates	Number of Seniors Taking Advanced Placement (AP) Courses	Number of AP Courses Taken by Seniors	Seniors with Dual Enrollment
Parkview High	599	511	182	284	804	13
GCPS	9,331	7,773	1,890	4,217	11,304	116

†Reflects system-reported data as of August 2010

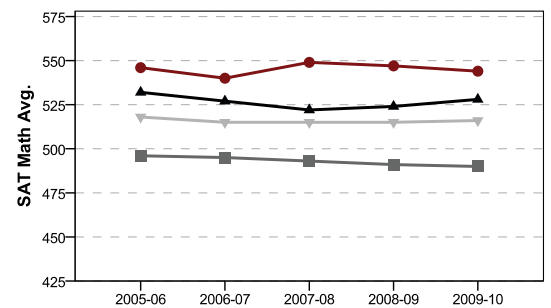
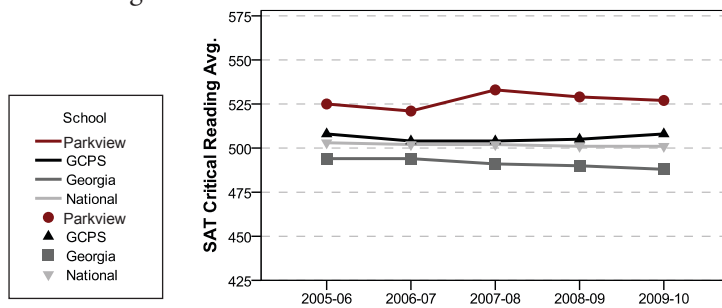
*Student information self-reported as of April 2010

2009–10 Results: SAT

A popular college-admissions test, the SAT features complex reading passages and math concepts, and a writing section. The table to the right shows average scores and percentages of students taking the SAT at our school, compared to the district, state, and nation. The graphs below compare Parkview students' scores to the Gwinnett, state, and national averages on the SAT.

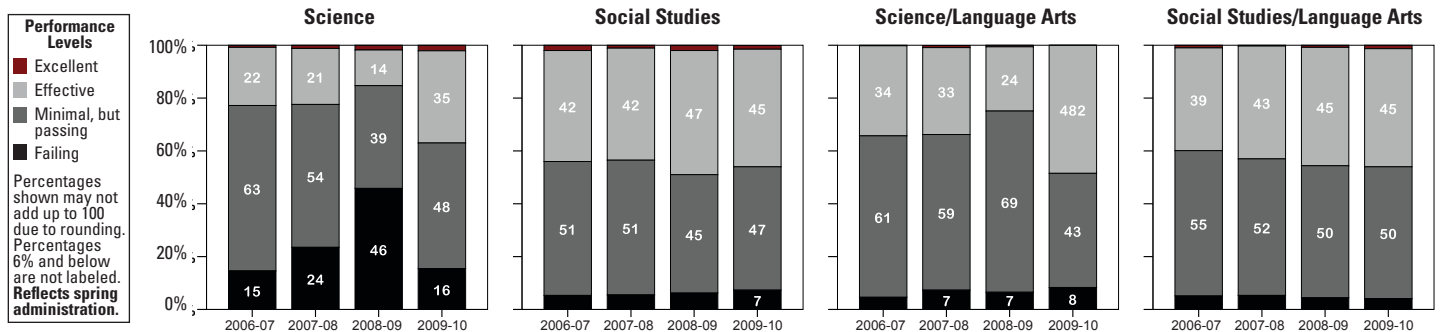
2009–10 SAT Averages

	Critical Reading	Math	Writing	Total	% Tested
Parkview	527	544	517	1588	89%
GCPS	508	528	496	1532	74%
Georgia	488	490	475	1453	64%
National	501	516	492	1509	37%



2009–10 Results: High School Gateway

To earn a regular diploma, Gwinnett high school students must pass both GCPS's High School Gateway and the Georgia High School Graduation Tests. Given in the 10th grade, the Gateway essay test covers content in social studies and science, as well as language arts skills—writing, grammar, and spelling. To ensure that more students meet the standard on the high school Gateway, GCPS is offering additional resources, tutorials, and practice opportunities through the school system website. While many students are successful on the test on their first try, those who are not have seven additional opportunities to take and pass the test before graduation.



2009–10 Results: Advanced Placement (AP) Exams

Advanced Placement (AP) courses are challenging, college-level classes taught by specially trained high school teachers. Students have the option of taking an AP exam at the end of the school year. Many colleges award credit for passing the exams or allow a student to be exempt from certain college courses. Students exposed to the demanding AP curriculum are well prepared for the rigors of college coursework. The table below shows the percentage of classes taken at Parkview High that were designated as AP classes, compared to the county average. The chart also shows the percentage of optional, course-specific AP exams taken, as well as the percentage of AP exams scored 3 or better (on a 5-point scale). In 2009–10, 32.7% of Parkview students took one or more AP courses, compared to 27.8% of all GCPS high school students.

	2006–07		2007–08		2008–09		2009–10	
	Parkview	GCPS	Parkview	GCPS	Parkview	GCPS	Parkview	GCPS
AP as Percentage of Total Classes Taken	5.7	5.4	7.5	6.2	7.6	7.3	10.3	8.8
% AP Exams Taken	87.2	72.8	84.9	74.6	87.7	77.3	84.4	77.0
% AP Exams Scored 3+	84.5	64.4	78.5	63.1	74.7	61.8	70.3	57.5

2009–10 Results: Georgia High School Graduation Tests (GHSGT) and Adequate Yearly Progress

Schools earn Adequate Yearly Progress (AYP) status by meeting a series of performance goals that every school, system, and the state as a whole must achieve under the federal No Child Left Behind Act. In Georgia, AYP for high schools is determined using results from the Georgia High School Graduation Tests (GHSGT) in English language arts and mathematics. These tests measure the knowledge and skills of students by assessing how well students have learned the state’s curriculum content standards. To make AYP, high schools must meet state-set student achievement goals and graduation standards for all students, and for all subgroups that have 40 or more students or 10% of the students in grade 11, whichever is greater (with a 75-student cap). In addition, schools must test 95% of all students and of all subgroups with 40 or more students. Georgia reports achievement scores for every subgroup with 10 or more students. However, the state only considers results for subgroups that meet the state-set minimum number of students in determining a school’s AYP status.

Parkview High achieved AYP	All Students	Asian/Pacific Islander	Black	Hispanic	American Indian/Alaskan	White	Multi-Racial	Students with Disabilities	Limited English Proficient	Economically Disadvantaged
Math Participation	Achieved	Achieved	Achieved	Achieved	.	Achieved	.	.	.	Achieved
Math Performance	Achieved	Achieved	Achieved	.	.	Achieved	.	.	.	Achieved
Eng. Lang. Arts Participation	Achieved	Achieved	Achieved	Achieved	.	Achieved	.	.	.	Achieved
Eng. Lang. Arts Performance	Achieved	Achieved	Achieved	.	.	Achieved	.	.	.	Achieved

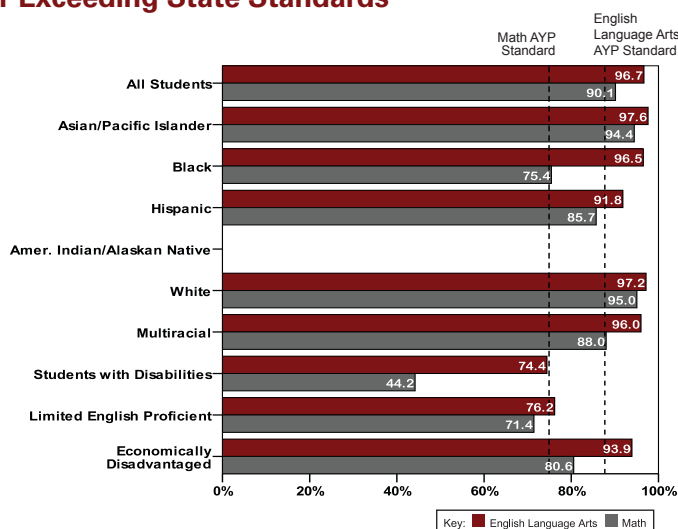
This school **achieved** the state’s graduation standard for all students.

• In the table above, only results for subgroups that meet the state-set minimum number of students are used to determine AYP

Percentage of Students Meeting or Exceeding State Standards

The GHSGT is a curriculum-based test used to measure high school students’ learning. Parkview High students continue to do well on the GHSGT, with percentages of students meeting and exceeding standards above the system averages in both English language arts and mathematics. The school made Adequate Yearly Progress (AYP), meeting all of the state’s academic goals, testing participation requirements, and graduation standards.

In the chart to the right, only subgroups with 10 or more students are reported. Results for groups smaller than the state minimum are not considered for AYP. The dotted lines on this graph represent the state’s AYP standard in Math and English Language Arts in 2010. The standards will increase to 100% by 2014. The chart to the right reflects spring and summer test administrations.



A Message from the Principal About Student Achievement and Academic Initiatives

Advanced Placement (AP) courses offer the most challenging and rigorous curriculum choice for our students, engaging students in college-level work in preparation for national AP exams. Parkview’s emphasis on increasing enrollment in Advanced Placement classes resulted in a 35% increase in the number of AP exams (1,576 exams) taken in May 2010. At 70.3%, our AP exam passing rate remained significantly above the national average. (A score of 3 or higher on the 5-point scale is considered passing on an AP exam) This improvement in Advanced Placement participation and performance resulted in Parkview once again being named as one of the top high schools in the nation by *Newsweek* magazine.

Results on other assessments also attest to a successful academic year. Our Georgia High School Graduation Tests passing rates in math and social studies were the highest in the district while our language arts and science passing rates ranked second in the county. Our average SAT score of 1588 was the second highest among Gwinnett County schools and was nearly 80 points above the national average.

The focus at Parkview High School continues to be on teaching and learning. The expectation in every classroom is that the teacher will provide a challenging, engaging lesson that will give students the opportunity to learn, grow, and be successful, resulting in measured improvement for all students. This is what our teachers expect, what our students expect, and what our community expects.

Parkview High School

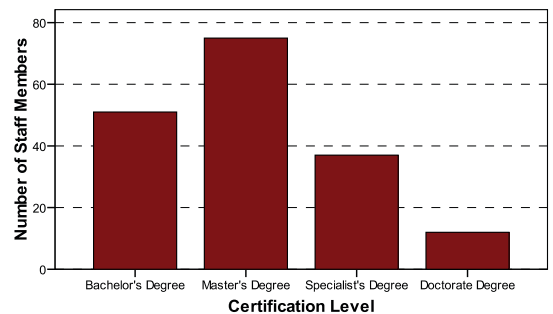
Other 2009–10 Highlights...



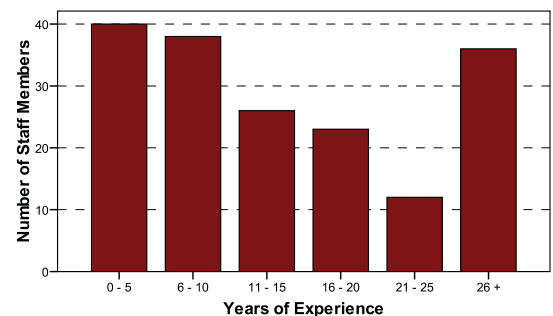
Gwinnett County Public Schools is the 2010 winner of The Broad Prize for Urban Education, the country's most prestigious honor for K–12 education.

- Parkview was named to the “Best American High Schools” list by *Newsweek* magazine, rating among the top 6% of U.S. high schools.
- The Class of 2010 included 182 Honor Graduates.
- In 2010, 92% of seniors planned postsecondary study.
- The class of 2010 was offered more than \$10 million in scholarships, not counting the HOPE Scholarship.
- Parkview had 11 National Merit Finalists.
- The school had 12 Governor’s Honors Program finalists.
- Two students were named Gates Millennium Scholars.
- One student was recognized as a United States Presidential Scholar.
- Four graduates received military service academy appointments.
- Parkview’s Marine Corps Junior Reserve Officers’ Training Corps (JROTC) program was recognized as a Naval Honors Program for the third straight year.
- Teacher Sanja Knezovic was named the Georgia German Teacher of the Year.
- Teacher Alexandra Kates was named the Georgia Secondary Art Teacher of the Year.
- Teacher Terry Cotton was named the Technology Student Association Sponsor of the Year.
- Parkview’s Science Olympiad Team won the State Science Olympiad Tournament and competed at the national tournament.
- *Pause*, the school’s literary magazine, received the Highest Award rank from the National Council of Teachers of English (NCTE) Program to Recognize Excellence in Student Literary Magazines.
- The Marine Corps JROTC raised more than \$30,000 in the group’s annual Toys for Tots fund drive.
- The school raised more than \$25,000 for Relay For Life.
- The Boys Cross Country team finished as State Runner-up. Parkview athletic teams were Region Champions in Volleyball, Girls Basketball, Girls Soccer, and Girls Track and Field. Both the Boys and Girls Track and Field teams were Gwinnett County Champions.

2009–10 Staff Data Staff Certification Level



Experience in Education



2009–10 Student Data

	School Year 09–10
Enrollment	2,712
+American Indian/Alaskan Native*	0%
+Asian*	19%
+Black/African American*	20%
+Hispanic or Latino, any race	12%
+Multiracial, two or more races*	4%
+Native Hawaiian/Pacific Islander*	0%
+White*	44%
Special Education	11%
ESOL	3%
Free/Reduced Lunch	31%
Average Attendance	96%

+ Reflects changes in ethnic and racial designations set by the federal government. As a result, 2009–10 data is not comparable to ethnic and racial categories from previous years and is reported for one year only.

*Not Hispanic or Latino

School Safety Perceptions

Based on responses to 2009–10 RBES Perception Survey...

- 82.9% of students agreed or strongly agreed that they felt safe at Parkview High.
- 94.7% of parents agreed or strongly agreed that their student’s school was safe.

*Reflects voluntary responses to parent and student perception surveys.

The mission of Gwinnett County Public Schools is to pursue excellence in academic knowledge, skills, and behavior for each student, resulting in measured improvement against local, national, and world-class standards.

Parkview High School
998 Cole Drive • Lilburn GA 30047
(770) 921-2874 • www.parkview.net
David T. Smith, Principal

Gwinnett County Public Schools
437 Old Peachtree Rd., NW • Suwanee, GA 30024-2978
www.gwinnett.k12.ga.us

2010 Gwinnett County Board of Education
Dr. Mary Kay Murphy, 2010 Chairman;
Dr. Robert McClure, 2010 Vice Chairman;
Carole C. Boyce; Louise Radloff; and Daniel D. Seckinger,
J. Alvin Wilbanks, CEO/Superintendent